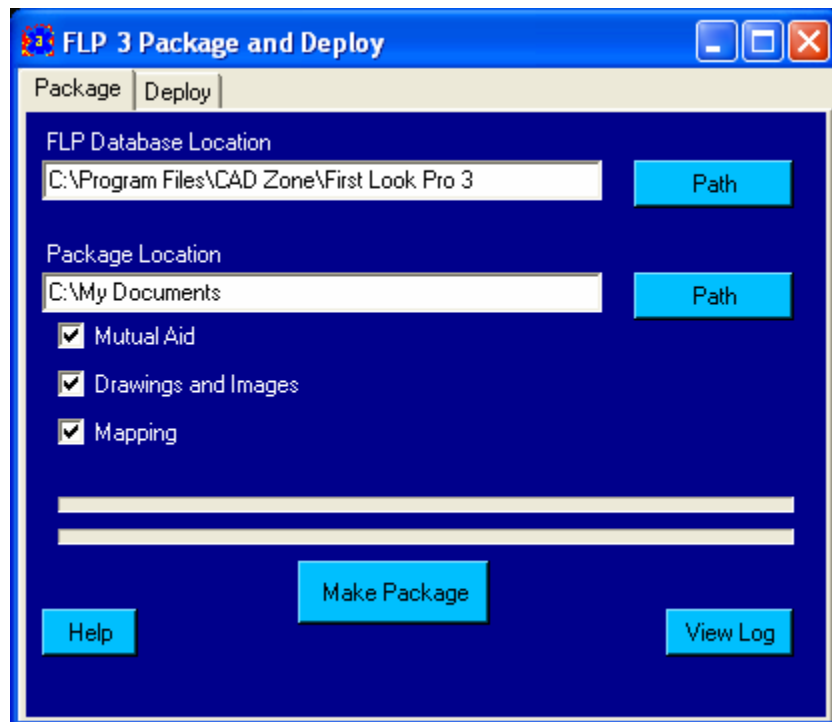


First Look Pro – Package and Deploy

Package and Deploy allows you to “bundle” your existing First Look PRO data and diagrams on a target “master” computer, then distribute the packaged data to other computers where the FLP data must mirror each other. The data can be deployed to different drives and directories on the satellite computers, but contains the same exact information as the master version. ***The Package and Deploy application is not a data synchronizer***, rather it is a simple way to move copied data from one location to another. The package and deploy process will need to be performed each time changes from the master database are distributed to the satellite computers.



The program has two distinct features:

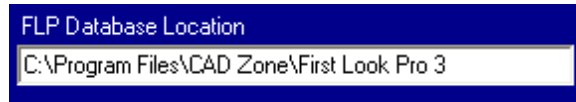
Package – Locates and bundles the existing First Look PRO data and diagrams in a compressed .zip file format.

Deploy – Maps the location where the zipped First Look Pro Data will be sent, opens the compressed data, and sets-up the First Look PRO preferences to match those of the master version.

Package command features:

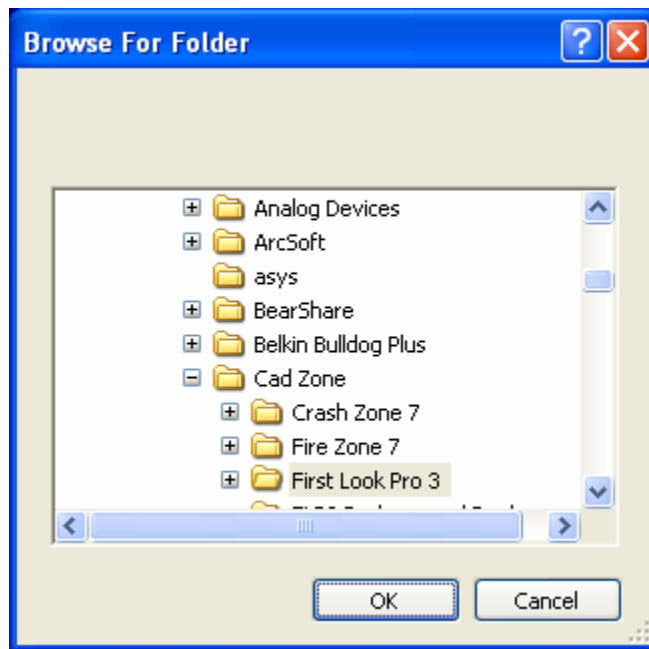
FLP Database Location:

Your First Look PRO data is contained in a file called FLP_control.mdb. In order for you to correctly package the contents of your database, the location of this file must be mapped even if it is on a different drive or directory.



Use the Path button to navigate to the directory containing the FLP_control.mdb file:

**Click the Path button to open the “Browse for Folder” dialog box.
Navigate to the directory that contains FLP_control.mdb.**



Click the OK button to set the path.

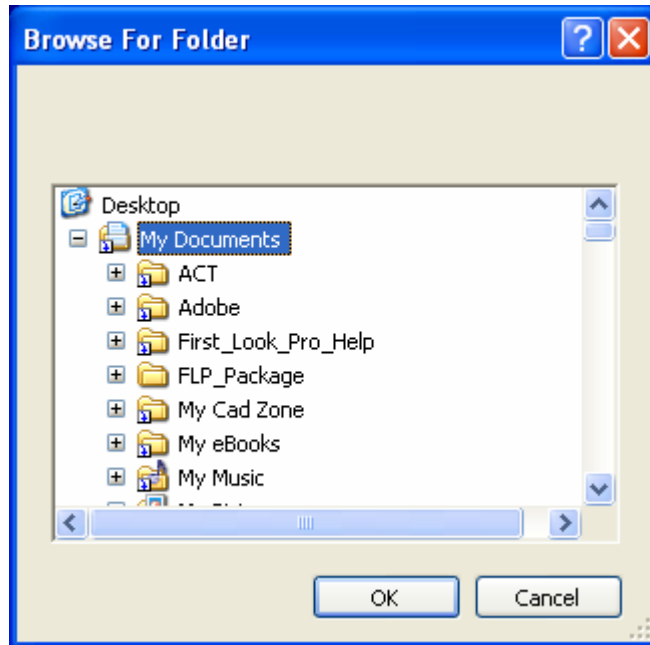
Package Location:

This is the location where you want the packaged First Look Pro data to be saved. The compressed data will be saved to a zip file called FLP_Package.zip. This zip file can be opened with any unzip program and copied to any media, such as a CD ROM.



Use the Path button to set the location where FLP_Package.zip is to be saved:

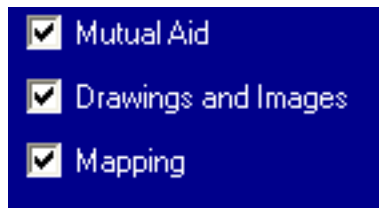
Click the Path button to open the “Browse for Folder” dialog box. Navigate to the desired file path (such as the My Documents folder).



Click the OK button to set the path.

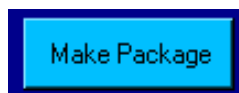
Check boxes:

Use these options to include your mapping files, mutual aid records, and drawings in the package. Leaving an option unchecked results in that data being excluded from the FLP_Package.zip file when it is created.



Make Package:

Once the locations have been selected, click the Make Package button to create the FLP_Package.zip. Use the progress bar, located at the bottom of the dialog box, to track the creation of the FLP_Package.zip file.



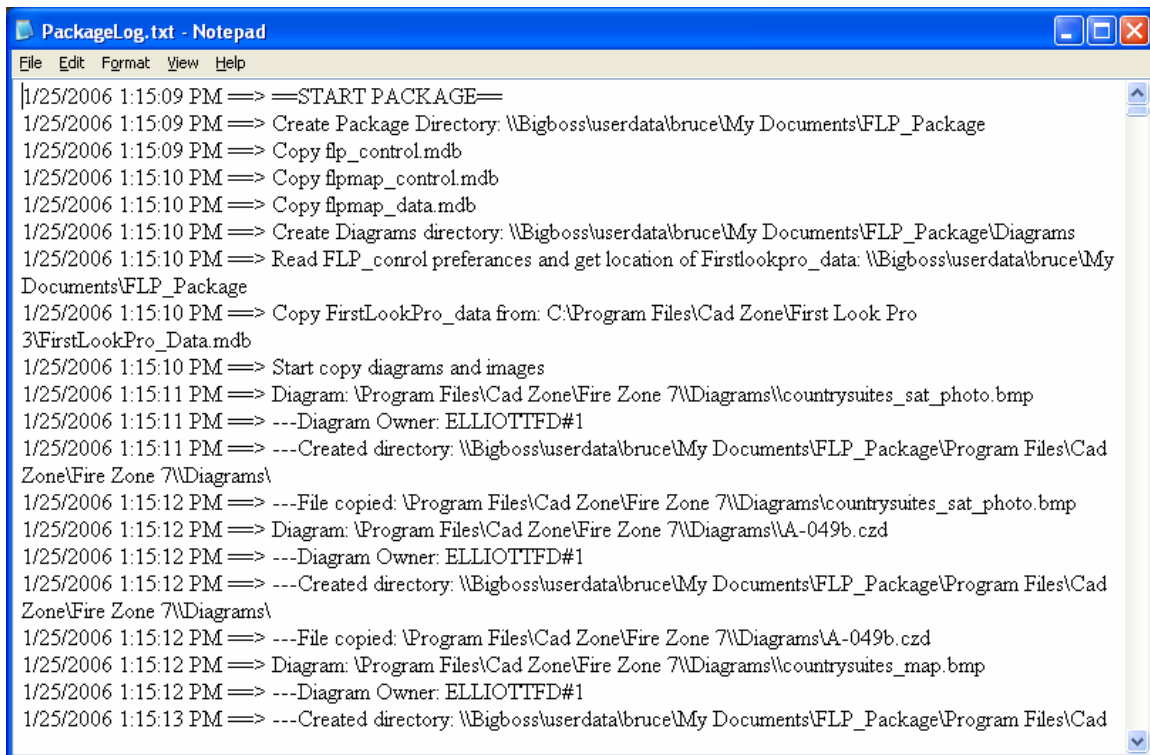
View log:

A “Package Log” is automatically created when the Make Package command is selected.

This log contains a complete list of the processes used in creating the FLP_Package.zip file. The log is saved as a .txt (ASCII text) file with the name "PackageLog.txt" in your computers My Documents directory. Clicking the View Log button opens the PackageLog.txt in Notepad.



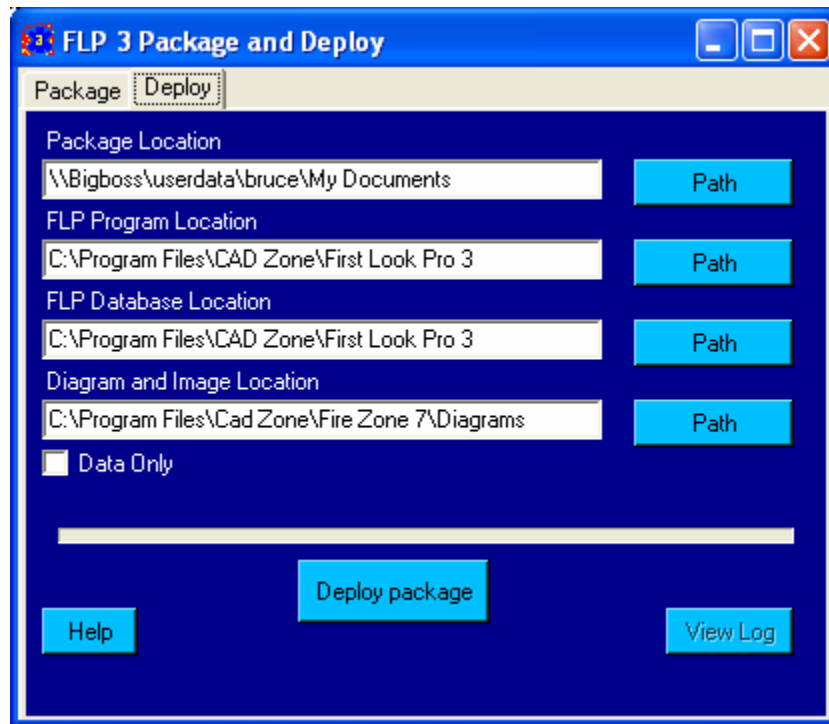
Use this log to verify that the First Look PRO files were packaged correctly. If any errors were encountered in during the Make Package process, they will be recorded and can be viewed within this file. Additionally, the PackageLog.txt can be emailed to The CAD Zone's technical support staff so they can assist you with any technical issues you may encounter.

A screenshot of a Notepad window titled "PackageLog.txt - Notepad". The window has a standard Windows interface with a menu bar (File, Edit, Format, View, Help) and a scrollable text area. The text in the window is a log of file operations, including directory creation, file copying, and diagram processing. The log entries are timestamped with dates and times from 1/25/2006 1:15:09 PM to 1:15:13 PM. The operations include creating a package directory, copying control and data files, creating a diagrams directory, reading preferences, copying FirstLookPro data, starting to copy diagrams and images, and processing two diagrams: "countrysuites_sat_photo.bmp" and "A-049b.czd". Each diagram entry includes the diagram owner "ELLIOTTFD#1" and the creation of a sub-directory for the diagram.

```
|1/25/2006 1:15:09 PM ==> ==START PACKAGE==
1/25/2006 1:15:09 PM ==> Create Package Directory: \\Bigboss\userdata\bruce\My Documents\FLP_Package
1/25/2006 1:15:09 PM ==> Copy flp_control.mdb
1/25/2006 1:15:10 PM ==> Copy flpmap_control.mdb
1/25/2006 1:15:10 PM ==> Copy flpmap_data.mdb
1/25/2006 1:15:10 PM ==> Create Diagrams directory: \\Bigboss\userdata\bruce\My Documents\FLP_Package\Diagrams
1/25/2006 1:15:10 PM ==> Read FLP_control preferences and get location of Firstlookpro_data: \\Bigboss\userdata\bruce\My Documents\FLP_Package
1/25/2006 1:15:10 PM ==> Copy FirstLookPro_data from: C:\Program Files\Cad Zone\First Look Pro
3\FirstLookPro_Data.mdb
1/25/2006 1:15:10 PM ==> Start copy diagrams and images
1/25/2006 1:15:11 PM ==> Diagram: \\Program Files\Cad Zone\Fire Zone 7\Diagrams\countrysuites_sat_photo.bmp
1/25/2006 1:15:11 PM ==> ---Diagram Owner: ELLIOTTFD#1
1/25/2006 1:15:11 PM ==> ---Created directory: \\Bigboss\userdata\bruce\My Documents\FLP_Package\Program Files\Cad
Zone\Fire Zone 7\Diagrams\
1/25/2006 1:15:12 PM ==> ---File copied: \\Program Files\Cad Zone\Fire Zone 7\Diagrams\countrysuites_sat_photo.bmp
1/25/2006 1:15:12 PM ==> Diagram: \\Program Files\Cad Zone\Fire Zone 7\Diagrams\A-049b.czd
1/25/2006 1:15:12 PM ==> ---Diagram Owner: ELLIOTTFD#1
1/25/2006 1:15:12 PM ==> ---Created directory: \\Bigboss\userdata\bruce\My Documents\FLP_Package\Program Files\Cad
Zone\Fire Zone 7\Diagrams\
1/25/2006 1:15:12 PM ==> ---File copied: \\Program Files\Cad Zone\Fire Zone 7\Diagrams\A-049b.czd
1/25/2006 1:15:12 PM ==> Diagram: \\Program Files\Cad Zone\Fire Zone 7\Diagrams\countrysuites_map.bmp
1/25/2006 1:15:12 PM ==> ---Diagram Owner: ELLIOTTFD#1
1/25/2006 1:15:13 PM ==> ---Created directory: \\Bigboss\userdata\bruce\My Documents\FLP_Package\Program Files\Cad
```

Deploy Command Features

Once the FLP_control.mdb file has been created using the Make Package command, it is ready to be deployed to any remote First Look PRO location.



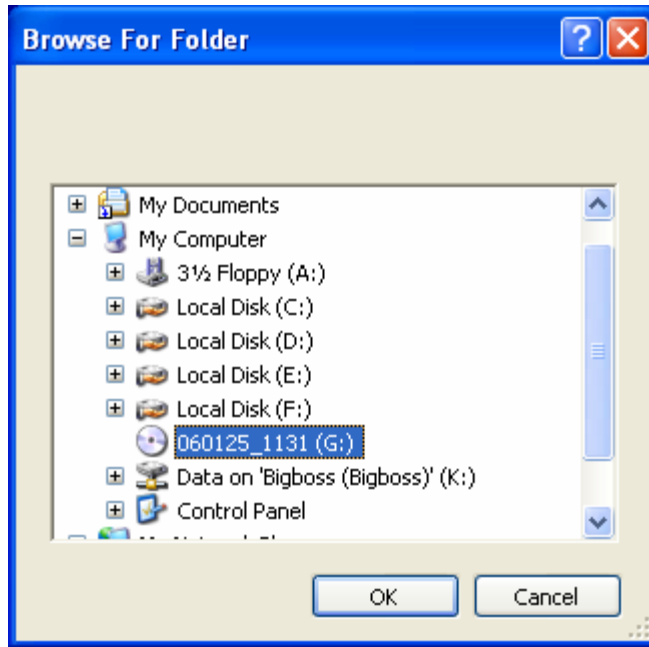
Package Location:

This is where the completed FLP_Package.zip is currently located and being copied from. This can be the original Package Location path set on the Package Tab, or it can be a CD-ROM, USB drive or on the network. The zip file is copied from this location to a work directory in the user local profile.



Use the Path button to set the location where FLP_Package.zip is to be copied to:

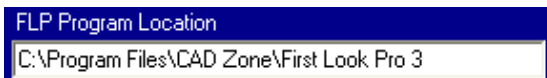
**Click the Path button to open the “Browse for Folder” dialog box.
Navigate to the desired file path.**



Click the OK button to set the path.

FLP Program Location:

This is the location where the remote First Look Pro's "FLP_control.mdb" file is located. In order for the packaged data to be deployed, this path must be mapped correctly for the packaged FLP_control.mdb file to overwrite the existing one.

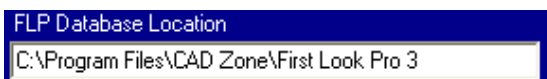


Use the Path feature to set the FLP Program Location:

Click the Path button to open the "Browse for Folder" dialog box.
Navigate to the desired file path.
Click the OK button to set the path.

FLP Database Location:

This is where the First Look Pro database will be located. The default location is the same as the program location, but this can be changed to anywhere on the local computer or a networked drive.



Use the Path feature to set the FLP Database location:

Click the Path button to open the "Browse for Folder" dialog box.
Navigate to the desired file path.

Click the OK button to set the path.

Diagram and image location:

This is where the First Look Pro diagrams and images will be located. This location can be set to anywhere on the local computer or a networked drive.



Use the Path feature to set the FLP Database location:

**Click the Path button to open the “Browse for Folder” dialog box.
Navigate to the desired file path.
Click the OK button to set the path.**

Data Only:

The Data Only option is used to deploy just the First Look PRO data (records, diagrams, and images) while excluding the FLP_control.mdb file. This allows you to deploy the FLP data to a remote computer without altering its existing administrative settings.

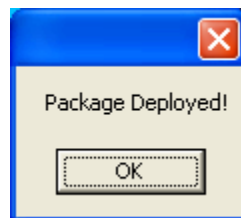


Deploy Package:

Once the location paths have been set, click the Deploy Package button to distribute the FLP_Package.zip file to the selected locations. Use the progress bar, located at the bottom of the dialog box, to track the deployment of the FLP_Package.zip file.



When the package has been successfully deployed, a dialog box appears confirming the process is completed.



Click the OK button to close the dialog.

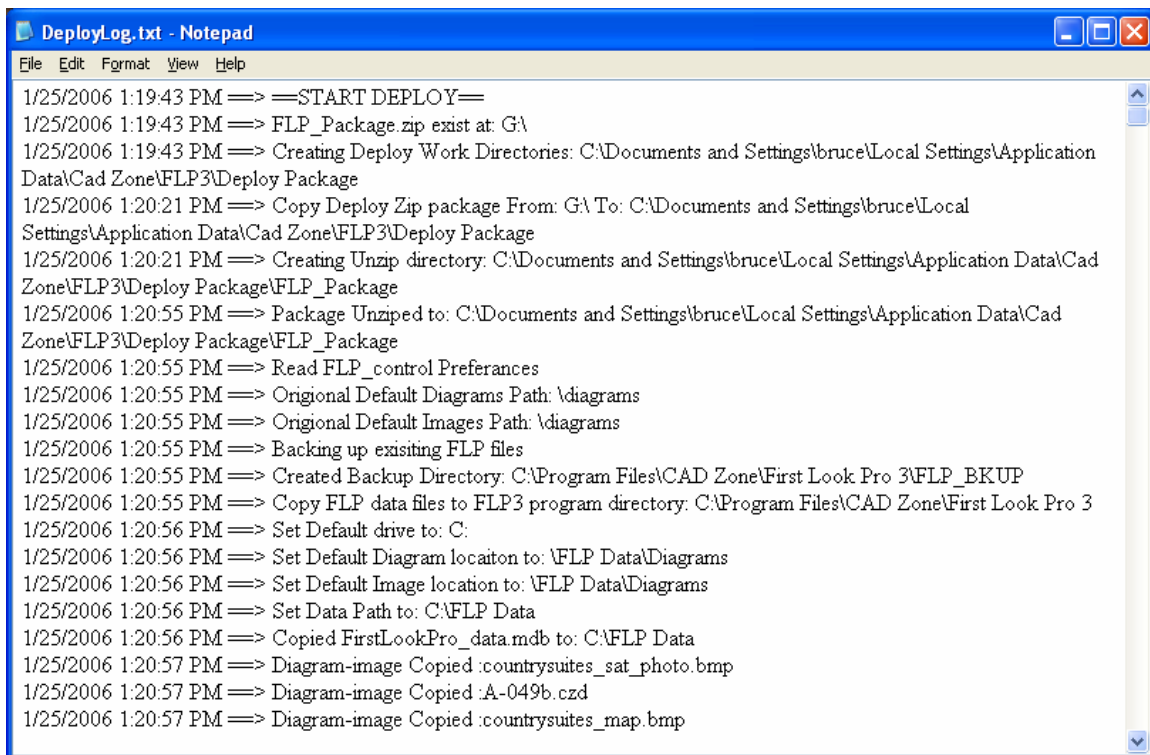
View log:

A “Deploy Log” is automatically created when the Deploy Package command is selected.

This log contains a complete list of the processes used in deploying your FLP_Package.zip file. The log is saved as a .txt (ASCII text) file with the name "DeployLog.txt" in your computers My Documents directory. Clicking the View Log button opens DeployLog.txt in Notepad.



Use this log to verify that the First Look PRO files were deployed correctly. If any errors were encountered in during the Deploy Package process, they will be recorded and can be viewed within this file. Additionally, the DeployLog.txt can be emailed to The CAD Zone's technical support staff so they can assist you with any technical issues you may encounter.

A screenshot of a Notepad window titled "DeployLog.txt - Notepad". The window has a standard Windows interface with a menu bar (File, Edit, Format, View, Help) and window control buttons. The text content of the log is as follows:

```
1/25/2006 1:19:43 PM ==> ==START DEPLOY==
1/25/2006 1:19:43 PM ==> FLP_Package.zip exist at: G:\
1/25/2006 1:19:43 PM ==> Creating Deploy Work Directories: C:\Documents and Settings\bruce\Local Settings\Application
Data\Cad Zone\FLP3\Deploy Package
1/25/2006 1:20:21 PM ==> Copy Deploy Zip package From: G:\To: C:\Documents and Settings\bruce\Local
Settings\Application Data\Cad Zone\FLP3\Deploy Package
1/25/2006 1:20:21 PM ==> Creating Unzip directory: C:\Documents and Settings\bruce\Local Settings\Application Data\Cad
Zone\FLP3\Deploy Package\FLP_Package
1/25/2006 1:20:55 PM ==> Package Unzipped to: C:\Documents and Settings\bruce\Local Settings\Application Data\Cad
Zone\FLP3\Deploy Package\FLP_Package
1/25/2006 1:20:55 PM ==> Read FLP_control Preferences
1/25/2006 1:20:55 PM ==> Original Default Diagrams Path: \diagrams
1/25/2006 1:20:55 PM ==> Original Default Images Path: \diagrams
1/25/2006 1:20:55 PM ==> Backing up exisiting FLP files
1/25/2006 1:20:55 PM ==> Created Backup Directory: C:\Program Files\CAD Zone\First Look Pro 3\FLP_BKUP
1/25/2006 1:20:55 PM ==> Copy FLP data files to FLP3 program directory: C:\Program Files\CAD Zone\First Look Pro 3
1/25/2006 1:20:56 PM ==> Set Default drive to: C:
1/25/2006 1:20:56 PM ==> Set Default Diagram locaiton to: \FLP Data\Diagrams
1/25/2006 1:20:56 PM ==> Set Default Image location to: \FLP Data\Diagrams
1/25/2006 1:20:56 PM ==> Set Data Path to: C:\FLP Data
1/25/2006 1:20:56 PM ==> Copied FirstLookPro_data.mdb to: C:\FLP Data
1/25/2006 1:20:57 PM ==> Diagram-image Copied :countrysuites_sat_photo.bmp
1/25/2006 1:20:57 PM ==> Diagram-image Copied :A-049b.czd
1/25/2006 1:20:57 PM ==> Diagram-image Copied :countrysuites_map.bmp
```