

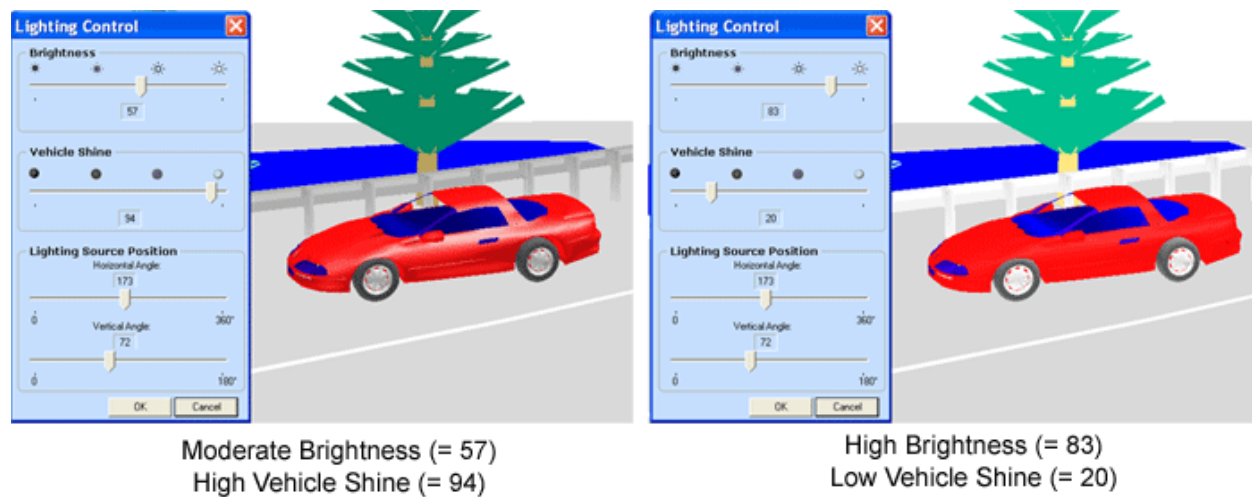
## Crash Zone – Crime Zone Version 9 is here! What's new?

It's been two years in the works, we've sweated over creating a more intuitive new interface, we've added a ton of new features and improved on the old ones, we spent months testing and then testing some more. Finally, it's done! The all new **Crash Zone and Crime Zone Version 9** programs are here! These programs are by far the most user friendly, efficient, and accurate, forensic mapping software available today.

The users who have been helping test Version 9 say it's the best CAD Zone program ever! We're getting reports of users saying they can complete drawings and animations 25% - 50% faster in Version 9.

**New! More Efficient User Interface** - The new "Tool Zone," left-hand toolbar, makes it easier than ever to find all your favorite drawing and editing tools. All the most commonly used commands have been brought together in a new, efficient layout so you can draw and edit faster. The entire screen has been updated with new colors, new icons, and more intuitive toolboxes.

**New! Adjust Vehicle Reflectivity!** Adjust the spectral reflectivity of vehicles to make them look more or less "shiny." Combine this feature with the new 3D Light Source Shading to create more realistic-looking 3D scenes. Now you can get exactly the look you want.



**New! 3D Light Source Positioning and Smooth Shading** - Now your 3D images will look even more realistic with our new smooth shading technology! New options allow you to choose the type of rendering and lighting control you want to use so you get the best possible image. You can adjust the light source both East-West and North-South to show the position of the sun during any time of day.

**Improved! Better Auto-Surfacing** - Auto-surfacing now allows you to select boundaries of complex shapes and generate quick 3D surfaces without overlapping sections. You can also apply the new Textures to surfaces to add a more realistic look to asphalt parking lots, grass fields, ponds, and so on.



## Version 9 is here! What's new?

**New! Critical Speed Calculator** – Determine critical speed of a selected arc or curve. Curves are divided into eight sections and the critical speed is performed for each section so you can compare them. The Critical Speed Calculator is just the latest addition to The Crash Zone's reconstruction tools.

**New! Realistic Textures** - Now you can choose to fill areas with a solid color, a 2D hatch pattern, or one of the new textures like grass, water, asphalt, brick, wood grain, or gravel. There are 50 new textures and all of them display in 2D and 3D views. Adjust the scale of the texture to make it look exactly the way you want it

**Improved! Compatible with AutoCAD 2011** - Now you can import AutoCAD® 2011 files in either .dwg and .dxf format.

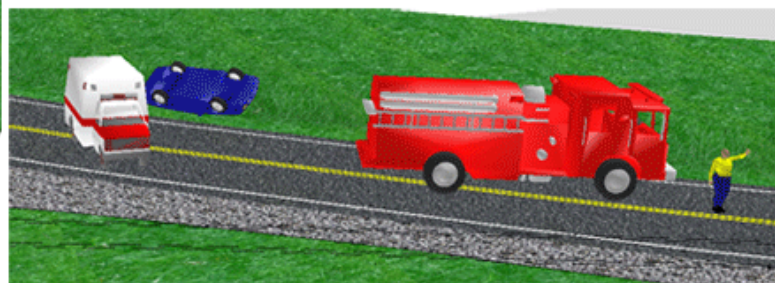
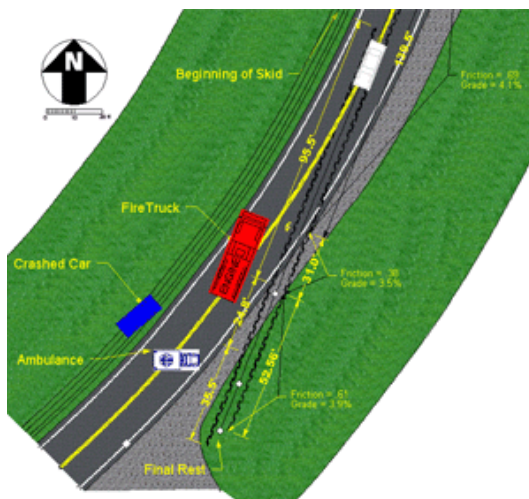
**Improved! 3D Symbol Preview** - The Symbol Manager has a new look so symbols are easier to find. You can choose whether to preview a symbol in 2D or 3D to make sure you get the one you want.

**New! 3D Object Length Tool** - Automatically measure and label the true, 3D, length of any object (arcs, curves, circles, lines, and polygons) selected in the diagram.

**Improved! Create .AVI Movies** –Now you can turn your animations into an industry-standard .AVI file and played on most movie players. You can also copy .AVI files to a DVD and play them on a TV.

**New! "Heads Up Display"** - Automatically show object properties and geometry on-screen as you draw. Just mouse over an object to see it's properties at the top of the screen.

**New! File and Symbol Search** -Use the new File Search feature to quickly find drawing files or symbol by simply entering a portion of their name. You specify the hard disk drives to search, such as your local computer or server.



Show textures like grass and gravel in 2D and 3D diagrams. You control Version 9's new light source shading and reflectivity to create realistic 3D models.

**Improved! Move through Animations** - The powerful Animation tools have been improved with the addition of a new "Moving Camera" feature. With this feature you can fix the "camera" to any position on a vehicle symbol. This lets you generate animations with a moving viewpoint, such as what might be seen by the driver of a vehicle. With the easy-to-use animation tools, you simply draw the paths of the symbols to animate and set up Key Event Points where changes in velocity and rotation take place. You can accurately synchronize the animation of up to 4 objects.

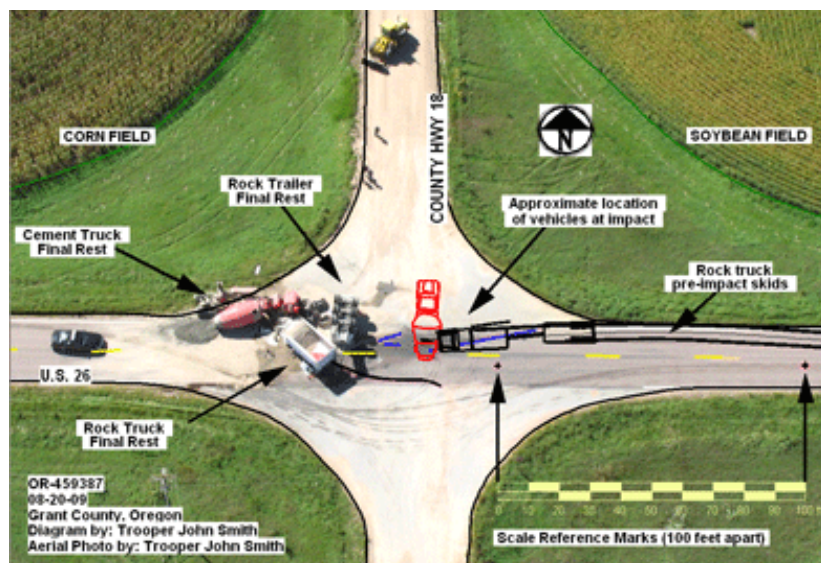
**Improved Text and Dimensions!** Many features, like Text and Dimensions, have been improved to make them easier and faster to use. All new toolboxes combine placing and editing features together so you save time in every diagram."

## Version 9 is here! What's new?

"There are many of us testers who have noticed the hard work you have put into CZ9. Once it is released, the rest of the CZ users out here will see the work that has been put into this new version.  
Keep up the excellent work!"

Detective William Redfairn, Las Vegas MPD

**New! Crush Calculator** - Use the new Vehicle Crush Calculator to determine the energy and the equivalent barrier speed from vehicle crush damage data using the 2pt / 4pt / 6pt crush calculation method. You can create a graphical crush model from your data and then place into your diagram.



**New! Aerial Views From Bing Maps** - A single mouse click gives you access to the powerful Bing™ mapping system, from Microsoft.® Enter an address or name of a facility and Bing retrieves a recent satellite photograph. You can pan and zoom to modify the view, then place the photo in your diagram. Place labels, lines, vehicles, and other symbols, using the aerial photo as a background. You can even place photographs on vertical surfaces, to show signs and building facades.



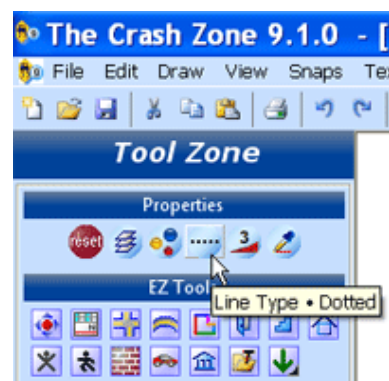
**New! Coordinate Manual Entry Tool** - This new tool greatly speeds up the process of entering coordinates for measurements - including Z elevation. Open the Coordinate Manual Entry tool and enter the three values separated by a comma, then press the Enter key or Apply button. If you don't enter a Z value it assumes Z = 0.

**Improved! High-resolution 3D Snapshots** - Windows 7 users can now create their 3D Snapshot images in higher resolutions, dependent on the resolution available with their video graphics card. (This feature is not available in Windows XP or Vista.)

**Improved! Easy-to-use Properties** - Now it's easy to see what properties are currently set and make changes. All the object property settings are at the very top of the Tool Zone left-hand toolbox, including Layer, Color, Line Type, Line Width, and Match Property.

**New! Point Label Display** - Point Label Display dynamically scales text associated with points brought in from laser measurement systems so it's easier to read. You choose whether to display the labels and how large to make the text for the point number, elevation, and description, of each point you bring in.

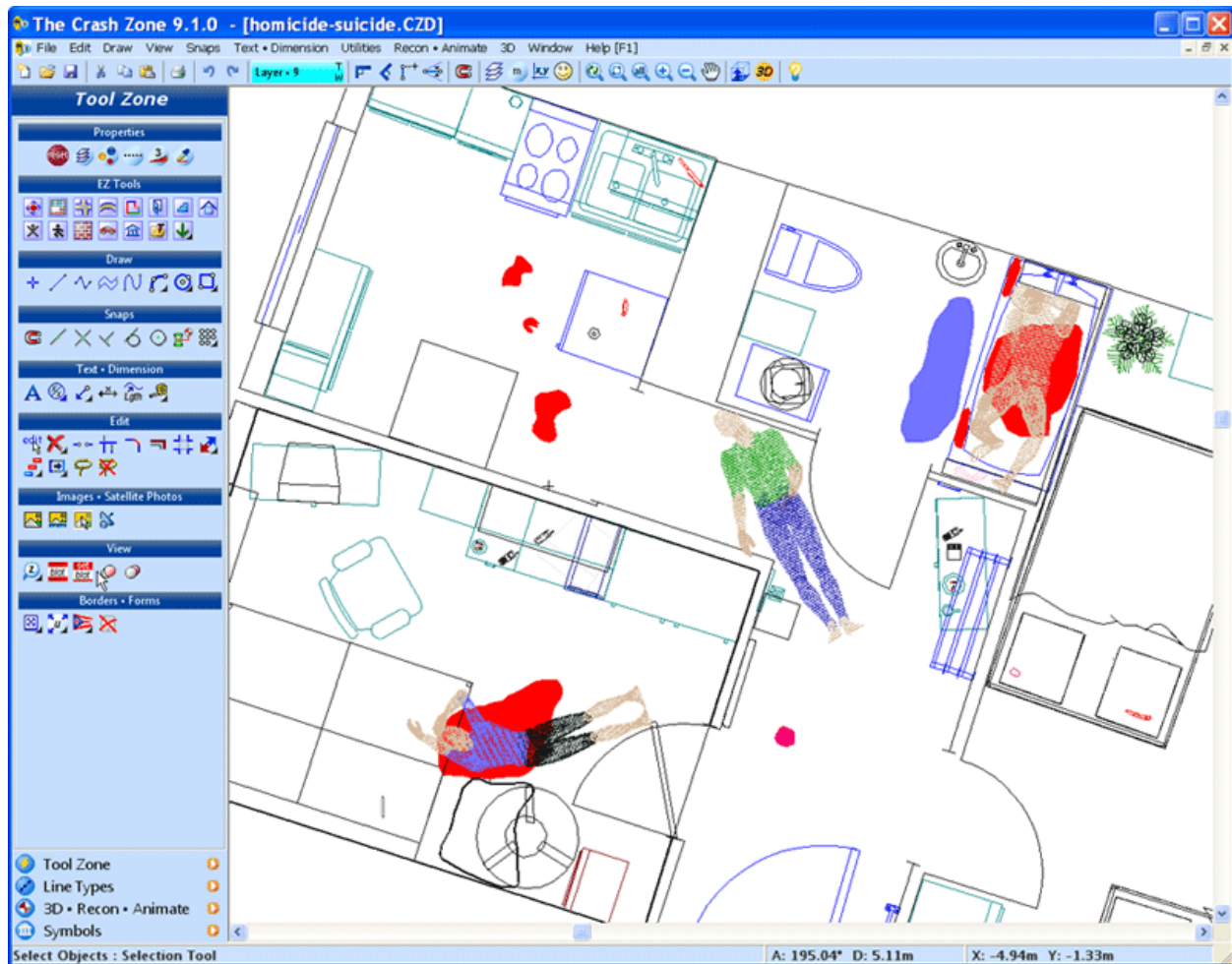
**Improved! Incremental File Save and Backup** - If you forget to save a new diagram, a message pops up after five minutes to remind you to name your diagram and save it. Your diagram file is then saved automatically for you every five minutes. You can choose to have multiple versions of the diagram saved so, in case some portion of the diagram is destroyed, you can always go back to the best one.



**Finish diagrams and animations faster than ever before.  
Upgrade to Crash Zone or Crime Zone Version 9 today!**

[Click to Download your FREE Evaluation Copy!](#)

*or call 877-769-5554 for more information.*



*The new Crash Zone and Crime Zone Version 9 program screen has been completely redesigned to be faster and easier to use.*